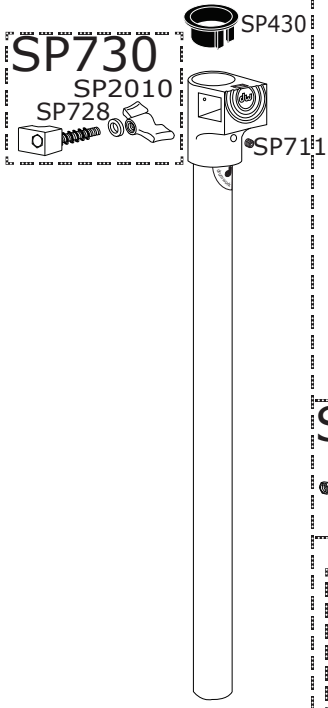


9700 DW Cymbal Stand

SP10R



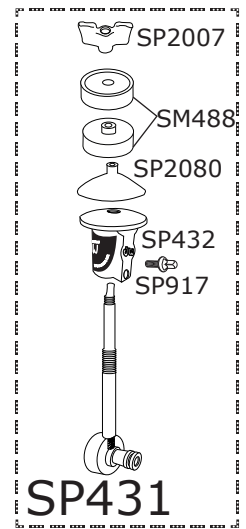
SP2019



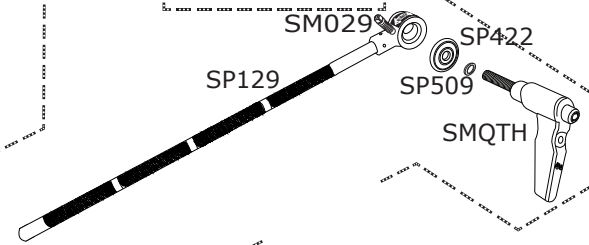
SP352



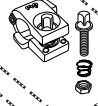
SM912



SP431



SM782

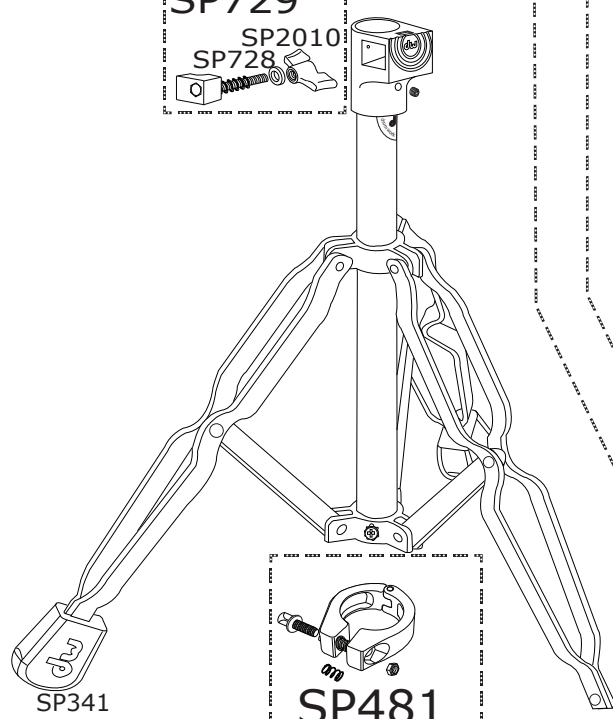


SP503

SP729



SP364



SP481



SP341

SP429

SM934

SP2020



9700 DW Cymbal Stand

| Part Number | Description |
|-------------|--|
| DWSMQTH | 5/16 X 3/4 QUICK TURN HANDLE |
| DWSM029 | 3/8" DRUM KEY SCREW (4 PACK) |
| DWSP10R | STANDARD 1" TUBE W/ 3/4" RECVR CASTING |
| DWSP129 | CYMBAL ARM |
| DWSP341 | RUBBER FOOT |
| DWSP352 | CLAMP FOR LEG ASSEMBLY |
| DWSP353 | 8MM WING SCREW |
| DWSP364 | PLASTIC BUSHING |
| DWSP422 | 1-1/8" STEEL WASHER |
| DWSP429 | TRIPOD ASSEMBLY TOM STAND |
| DWSP431 | TILTER ASSEMBLY |
| DWSP432 | CYMBAL SEAT |
| DWSP481 | 1.25" MEMORY LOCK |
| DWSP488 | PAIR OF TOP AND BOTTOM FELTS W/ WASHER |
| DWSP502 | WASHER |
| DWSP503 | 3/4" RATCHET CASTING W/TUBE |
| DWSP506 | 3/4" RATCHET HOUSING |
| DWSP508 | RATCHET BOLT SPRING |
| DWSP509 | RATCHET BOLT WASHER |
| DWSP711 | SET SCREW |
| DWSP728 | WASHER |
| DWSP729 | CLAMP SCREW |
| DWSP730 | CLAMP SCREW FOR TUBE JOINT, SHORT |
| DWSM782 | 1/2" MEMORY LOCK |
| DWSM912 | 1/2 X 18 BOOM CYMBAL ARM |
| DWSP917 | DRUM KEY SCREW |
| DWSP990 | BALL IN SOCKET ASSEMBLY WITH 1" TUBE |
| DWSM934 | BOOM ARM (DWSM912) 3/4" X 18" TUBE |
| DWSP2007 | M8 WING NUT FOR TILTER (4 PACK) |
| DWSP2010 | 6MM WING NUT FOR TUBE JOINT (4 PACK) |
| DWSP2019 | 1" MEMORY LOCK |
| DWSP2020 | 3/4" MEMORY LOCK |
| DWSP2080 | BLACK PLASTIC CYMBAL SLEEVE |

