

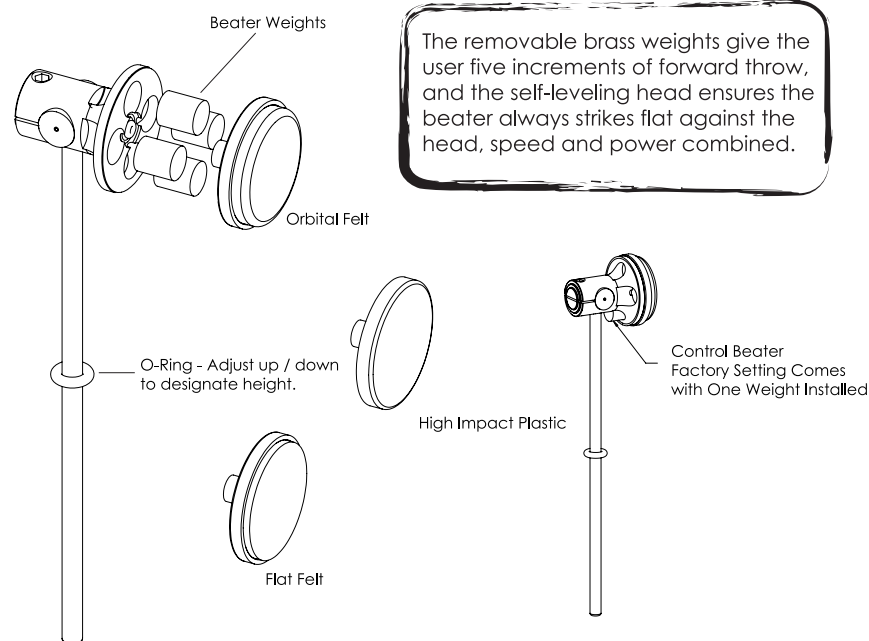


LIMITED WARRANTY

For a period of five years from the date of purchase, Drum Workshop, Inc. guarantees the original owner, when presented with proof of purchase, that all DW Manufacturing Bass Drum Pedal machined parts are free of material and manufacturing defects. This warranty is limited to machined parts only; such as the footboard, heel, cam, base, supports, etc. This warranty does not include moving parts; such as the spring assembly, beater ball, drive shaft, ball bearings, etc. If under normal playing conditions parts covered in this limited five year warranty fail, they will be replaced at no charge.

Contact your authorized DW dealer to initiate a warranty claim. If there is not a dealer in your area, contact DW direct. DO NOT send pedal to DW without first receiving a Return Authorization Number. Shipping charges to DW will be paid by the consumer. Drum Workshop, Inc will not accept returns with evidence of misuse or alteration. DW's maximum liability pursuant to this warranty is limited to the monetary value of the product that is the subject of the warranty claim.

specifications subject to change without notice
 www.drumworkshop.com
 3450 Lunar Court • Dixon, CA 95303 USA
 Drum Workshop, Inc.

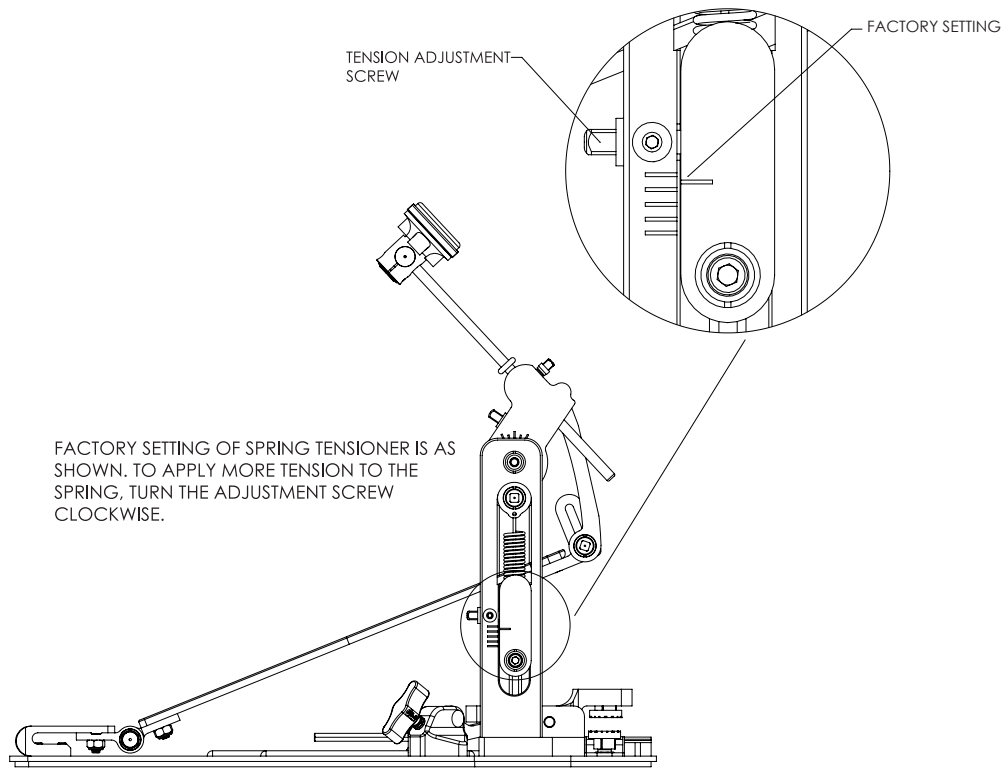


The removable brass weights give the user five increments of forward throw, and the self-leveling head ensures the beater always strikes flat against the head, speed and power combined.

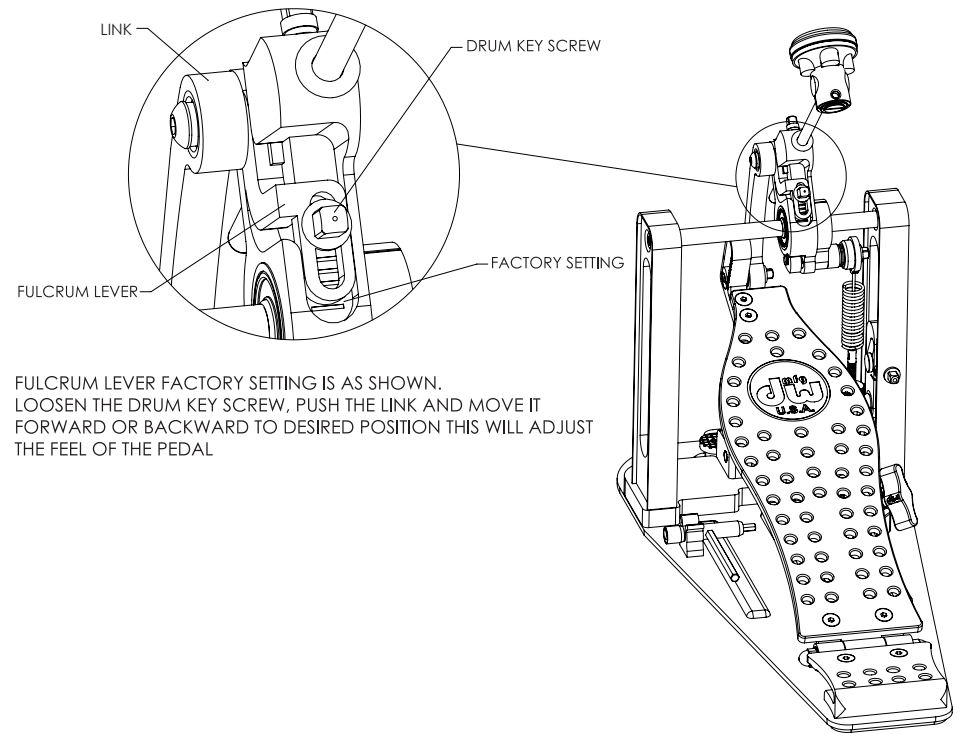
DW Control Beater

*Beater comes with 4 removable Brass Weights , each 10g (0.35oz)
 Total beater weight: 104g (3.67oz)
 Empty beater weight: 64g (2.26oz)

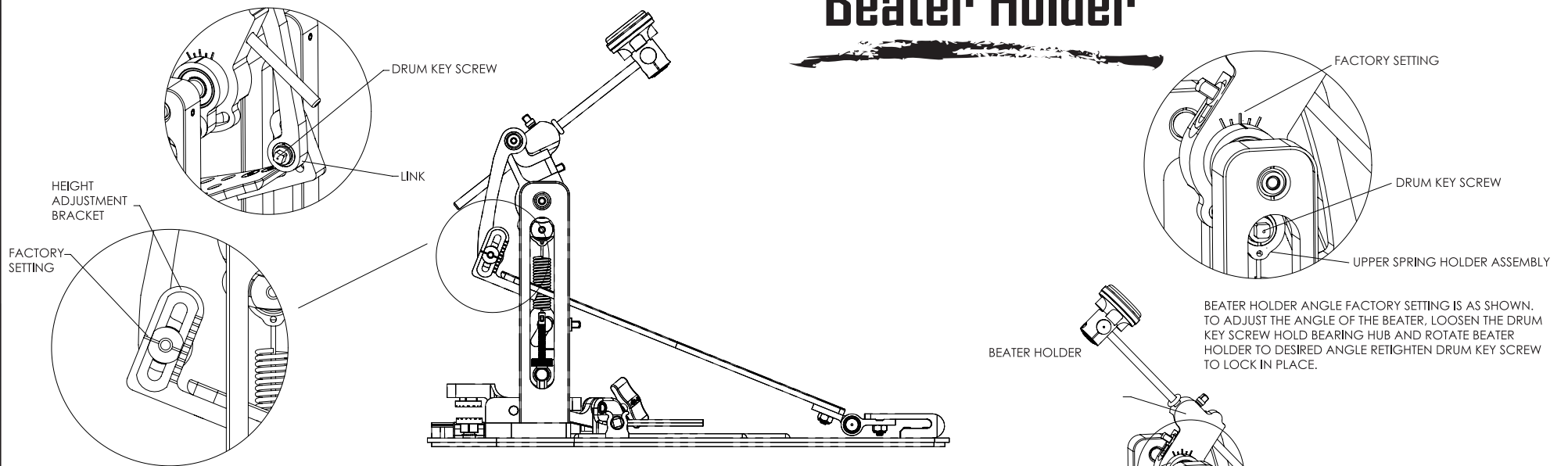
Spring Tension Adjustments



Fulcrum Lever Adjustments



Beater Holder



HEIGHT ADJUSTMENT BRACKET FACTORY SETTING IS AS SHOWN. LOOSEN THE DRUM KEY SCREW ON LOWER END OF LINK RAISE FOOTBOARD TO DESIRED HEIGHT, RETIGHTEN DRUM KEY SCREW

Height Adjustment Bracket

